

MARKANT

Matrix Pro single

Specsheet

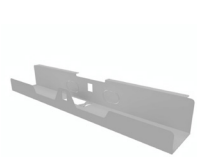


Matrix Pro single specsheet



Electric sit/stand:	64 - 129 cm high (65 cm stroke)
Standby power use:	0.1 W per desk
Power supply:	DC 20 V per desk
Motor system comply ROHS noise:	48 dB
Adjustable frame width:	120 - 180 cm length
Table top depth:	75 - 90 cm depth
Maximum load:	61 kg per leg
Maximum speed:	36 mm/s
Leg size:	60 mm x 95 mm

Cable management - optional

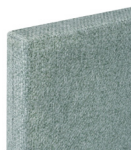


Cablegutter
■ ■ ■



Cable spine
■ ■ ■

Acoustics - optional



E-Panel



MyScreen

Height adjustable



Standard with up & down button.



Digital handset available as option.

Matrix Pro frame colors



Black



White



Silver

Electronics - optional



Mediahub



Q4 1 x Zoom 102

Worktops



Black



White



Grey



Beech